

**MARTES 03 DE MAYO DE 2016**  
Duración 45 minutos

- La prueba es individual. Está prohibido el uso de libros y diccionarios.
- Las 45 preguntas estan reagrupadas por competencias. Solo hay una única respuesta correcta por pregunta.
- Para responder a cada pregunta, marca la casilla correspondiente en la PLANTILLA DE RESPUESTAS. Utiliza un bolígrafo **negro** o un rotulador **negro**.
- En cada uno de los bloques las preguntas   (color claro) valen 5 puntos, las preguntas   (color intermedio) valen 6 puntos y las preguntas   (color oscuro) valen 7 puntos
- Por cada respuesta incorrecta se quita un cuarto del valor de la pregunta en puntos. Las preguntas que se dejen en blanco darán 0 puntos. Asimismo, se darán 0 puntos a las preguntas donde se marque más de una respuesta.

## B Vocabulary

- 4 Complete the word: K I \_ C H E N.  
A. C                      B. T                      C. S                      D. N
- 5 Complete the sequence: 9, 10, 11, ..... , 13.  
A. twenty              B. twelve              C. eleven              D. eight
- 6 My sister wants a glass of water because she's .....  
A. pretty              B. hungry              C. thirsty              D. empty
- 7 Don't forget to brush your ..... before you go to bed.  
A. light              B. face              C. ears              D. teeth
- 8 He often plays football ..... Saturdays.  
A. at              B. this              C. on              D. the
- 9 Complete this "family" of words: tie, shirt, coat, .....  
A. skirt              B. sofa              C. shoulder              D. shop

## C A postcard

Hi Sam,

It's great here! We go swimming every day – the sea is so warm! But the beach is always very crowded. In the evenings, after dinner at the hotel, we usually go for a walk in the town – the shops are open very late.

Love,  
Helen

Sam Jones  
14 High Street  
Bath BA1 6JA  
England

- 10 This is a postcard from .....  
A. Sam to Helen                      C. Helen to a friend  
B. a girl to her mother              D. Sam to his girlfriend
- 11 Where is Helen?  
A. At school.              B. In London.              C. At the seaside.              D. At home.
- 12 Find the true sentence.  
A. The sea is cold.              C. There are always a lot of people on the beach.  
B. Helen is on holiday alone.              D. Helen is staying at a friend's house.
- 13 What does Helen usually do in the evenings?  
A. She has dinner in the town.  
B. She walks around the town and looks at the shops.  
C. She stays at the hotel.  
D. She goes shopping before dinner.

## D Sounds

- 14 The number "4" rhymes with ".....".  
A. our              B. far              C. your              D. sir
- 15 "Eight" rhymes with ".....".  
A. eat              B. late              C. hat              D. fight
- 16 "November" = o o o. "Elephant" = .....  
A. O o o              B. o O o              C. o o O              D. O o o o

↑ **Copia aquí**  
el número de 7 cifras que aparece en la parte superior derecha de la plantilla de respuestas. Necesitarás este número para poder acceder a tus resultados en Internet.



### >>> Miércoles 4 de mayo de 2016 <<<

Se publicará la solución a los cuestionarios en nuestro sitio web.

### >>> Lunes 30 de mayo de 2016 <<<

Se publicarán todos los resultados en nuestro sitio web y cada participante podrá imprimir su propio CERTIFICADO OFICIAL en su cuenta.

## A A game



- 1 In the picture, we can see .....  
A. ten children              B. seven girls              C. some boys and girls              D. a green ball
- 2 They are playing volleyball .....  
A. near a street              B. in the gym              C. in a forest.              D. on the beach
- 3 The girl on the right .....  
A. has got blond hair                      C. is looking at her friends  
B. has got blue shorts                      D. is wearing trousers

**E A webpage**

**COME TO THE TOWER OF LONDON!**

The Tower of London is an enormous old castle in London, very near the river Thames. It dates from the 11th century and about 2 million people visit it every year. There are lots of things to see! The guides are also the castle guards – often called “Beefeaters” (see the picture). They wear a special blue and red uniform.

**Adult: £20 – Child (under 15): £11**

- 17 The Tower of London is .....  
 A. not very old    B. small    C. very big    D. a new house
- 18 Where is the Tower of London?  
 A. Near the sea.    C. Near London.  
 B. In the north of England.    D. Next to a river.
- 19 ..... the castle.  
 A. No one comes to    C. A lot of people visit  
 B. 3 million people live in    D. Tourists don't visit
- 20 A “Beefeater” does **not** .....  
 A. guard the castle    C. guide visitors  
 B. need a guide    D. wear a uniform
- 21 Maggie, Tom and their children (aged 10, 13 and 17) want to visit the Tower of London. How much must they pay?  
 A. Seventy-three pounds.    C. Eighty-two pounds.  
 B. Ninety-one pounds.    D. One hundred pounds.

**F Britain**

- 22 The British flag is red, white and .....  
 A. blue    B. yellow    C. green    D. black
- 23 England is part of the ..... Kingdom.  
 A. United    B. British    C. European    D. London
- 24 Prince William's ..... is called Elizabeth.  
 A. wife    B. sister    C. grandmother    D. mother
- 25 ..... is a city in the north-west of England.  
 A. Dover    B. Liverpool    C. Dublin    D. Cardiff

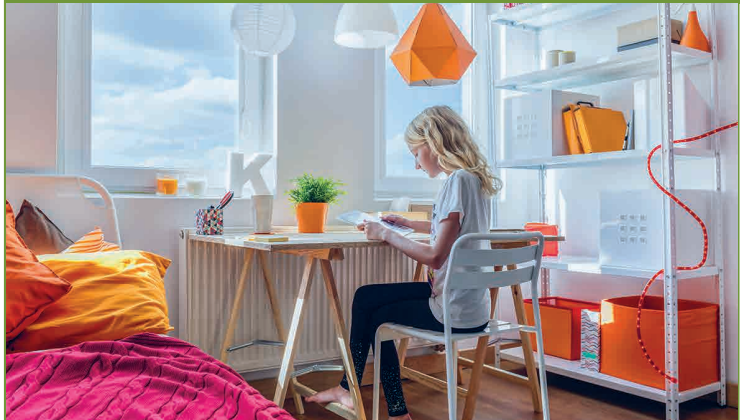
**G Verbs**

- 26 My school ..... in London.  
 A. am    B. is    C. have    D. are
- 27 ..... talk in class! Be quiet!  
 A. You    B. Don't    C. Must    D. Not
- 28 Jack always ..... his homework before dinner.  
 A. makes    B. watches    C. is writing    D. does
- 29 ..... have fish and chips for lunch please, Mum?  
 A. I like    B. Can we    C. We want    D. Are we
- 30 “..... you often ..... to the cinema?” “Yes, every Saturday”.  
 A. Do ... go    B. Have ... like    C. When do ... go    D. Are ... going
- 31 Next Friday, Barack Obama ..... England for an official visit.  
 A. comes in    B. can come on    C. going to    D. is coming to

**H Situations**

- 32 Your friend Susan is crying. What can you ask her?  
 A. “How old are you?”    C. “Are you all right?”  
 B. “Who are you?”    D. “Can you help?”
- 33 You are playing football in your garden. The ball goes into your neighbour's garden. What can you say to your neighbour?  
 A. “I'm fine, thank you.”    C. “I'm very sorry.”  
 B. “Don't worry.”    D. “I'm not angry.”
- 34 You are meeting a person for the first time. What can you say?  
 A. “Happy to see you again.”    C. “Goodnight.”  
 B. “See you soon.”    D. “Nice to meet you.”
- 35 A man says, “I'd like a chicken and a leg of lamb, please.” Where is he?  
 A. In a butcher's.    C. At a fast-food restaurant.  
 B. In a chemist's.    D. At a baker's.
- 36 Taylor Swift is very angry because some photographers are outside her house. She wants to be alone. What can she say to them?  
 A. “Look out!”    B. “Go away!”    C. “Come on!”    D. “Get up!”
- 37 You ask your mother, “Can I have a glass of milk, please?” What can she say when she gives the glass of milk to you?  
 A. It's this.    B. Here you are.    C. It's over here.    D. There is.

**I Katy's bedroom**



- 38 Katy's favourite colour is probably .....  
 A. black    B. brown    C. orange    D. green
- 39 Where is the desk?  
 A. In the corner.    C. Under the bed.  
 B. On the shelves.    D. Between the bed and the shelves.
- 40 The bedroom is .....  
 A. dark    B. tidy    C. welcome    D. careful
- 41 Find the list of words that you can associate with the picture.  
 A. window, lamp, wardrobe    C. boxes, shelves, plant  
 B. sofa, floor, wall    D. bed, skirt, curtains

**J The Biggest Challenge**

- 42 Why ..... every time I speak to her?  
 A. I'm laughing    C. is she smiling  
 B. she's crying    D. does she laugh
- 43 “Ear” **doesn't** rhyme with “.....”.  
 A. near    B. pear    C. we're    D. here
- 44 There ..... children in the classroom. They're all at the swimming-pool.  
 A. are some    B. haven't many    C. aren't any    D. is a lot of
- 45 ..... cathedral in London has a huge dome and dates from the 17th century.  
 A. Westminster    B. St Paul's    C. City    D. Our Lady's