

LEVEL 1

KLASSE 5

DIENSTAG, 03. MAI 2016 - Dauer: 45 Minuten

the **BIG** Challenge

THE FIRST ENGLISH CONTEST FOR SCHOOLS

www.thebigchallenge.com/de

Bockenheimer Landstraße 17/19 - 60325 Frankfurt
Tel. 069 - 710 423 240

- Der Test wird einzeln, ohne Hilfestellung und ohne Hilfsmittel wie Bücher oder Wörterbücher durchgeführt.
- Die 45 Fragen sind nach Kompetenzen sortiert. Je Frage gibt es nur eine richtige Antwort.
- Mit einem schwarzen Kugelschreiber oder Filzstift muss für jede Frage auf dem ANTWORTBOGEN das Kästchen angekreuzt werden, das der richtigen Antwort entspricht.
- Innerhalb der verschiedenen Blöcke gibt es jeweils 5 Punkte für Fragen mit einem hellen Farbton ■, 6 für Fragen mit einem mittleren Farbton ■ und 7 Punkte für Fragen mit einem dunklen Farbton ■.
- Bei einer falschen Antwort wird ein Viertel des vorgesehenen Punktwertes eingebüßt. Wenn auf eine Frage keine Antwort gegeben wird, geht diese Frage mit null Punkten in die Bewertung ein. Wenn auf eine Frage mehrere Antworten gegeben werden, gibt es ebenfalls null Punkte.

B Vocabulary

- 4 Complete the word: K I _ C H E N.
A. C B. T C. S D. N
- 5 Complete the sequence: 9, 10, 11, , 13.
A. twenty B. twelve C. eleven D. eight
- 6 My sister wants a glass of water because she's
A. pretty B. hungry C. thirsty D. empty
- 7 Don't forget to brush your before you go to bed.
A. light B. face C. ears D. teeth
- 8 He often plays football Saturdays.
A. at B. this C. on D. the
- 9 Complete this "family" of words: tie, shirt, coat,
A. skirt B. sofa C. shoulder D. shop


C A postcard

Hi Sam,

It's great here! We go swimming every day – the sea is so warm! But the beach is always very crowded. In the evenings, after dinner at the hotel, we usually go for a walk in the town – the shops are open very late.

Love,
Helen

Sam Jones
14 High Street
Bath BA1 6JA
England



- 10 This is a postcard from
A. Sam to Helen C. Helen to a friend
B. a girl to her mother D. Sam to his girlfriend
- 11 Where is Helen?
A. At school. B. In London. C. At the seaside. D. At home.
- 12 Find the true sentence.
A. The sea is cold. C. There are always a lot of people on the beach.
B. Helen is on holiday alone. D. Helen is staying at a friend's house.
- 13 What does Helen usually do in the evenings?
A. She has dinner in the town.
B. She walks around the town and looks at the shops.
C. She stays at the hotel.
D. She goes shopping before dinner.

D Sounds

- 14 The number "4" rhymes with ".....".
A. our B. far C. your D. sir
- 15 "Eight" rhymes with ".....".
A. eat B. late C. hat D. fight
- 16 "November" = o O o. "Elephant" =
A. O o o B. o O o C. o o O D. O o o o

--	--	--	--	--	--	--

↑ **Trage hier**
die 7-stellige Nummer ein, die auf deinem Antwortbogen rechts oben eingetragen ist. Diese Nummer brauchst du, um deine Punktzahl im Internet einsehen zu können.



>>> **Mittwoch, 04. Mai 2016** <<<
Die Lösungen sind auf unserer Seite verfügbar.

>>> **Mittwoch, 01. Juni 2016** <<<

Die Ergebnisse stehen vollständig zur Verfügung und jeder Teilnehmer kann in seinem Benutzerkonto sein eigenes OFFIZIELLES ZERTIFIKAT ausdrucken.

A A game



- 1 In the picture, we can see
A. ten children B. seven girls C. some boys and girls D. a green ball
- 2 They are playing volleyball
A. near a street B. in the gym C. in a forest. D. on the beach
- 3 The girl on the right
A. has got blond hair C. is looking at her friends
B. has got blue shorts D. is wearing trousers

E A webpage

- 17 The Tower of London is
 A. not very old B. small C. very big D. a new house
- 18 Where is the Tower of London?
 A. Near the sea. C. Near London.
 B. In the north of England. D. Next to a river.
- 19 the castle.
 A. No one comes to C. A lot of people visit
 B. 3 million people live in D. Tourists don't visit
- 20 A “Beefeater” does **not**
 A. guard the castle C. guide visitors
 B. need a guide D. wear a uniform
- 21 Maggie, Tom and their children (aged 10, 13 and 17) want to visit the Tower of London. How much must they pay?
 A. Seventy-three pounds. C. Eighty-two pounds.
 B. Ninety-one pounds. D. One hundred pounds.

F Britain

- 22 The British flag is red, white and
 A. blue B. yellow C. green D. black
- 23 England is part of the Kingdom.
 A. United B. British C. European D. London
- 24 Prince William's is called Elizabeth.
 A. wife B. sister C. grandmother D. mother
- 25 is a city in the north-west of England.
 A. Dover B. Liverpool C. Dublin D. Cardiff

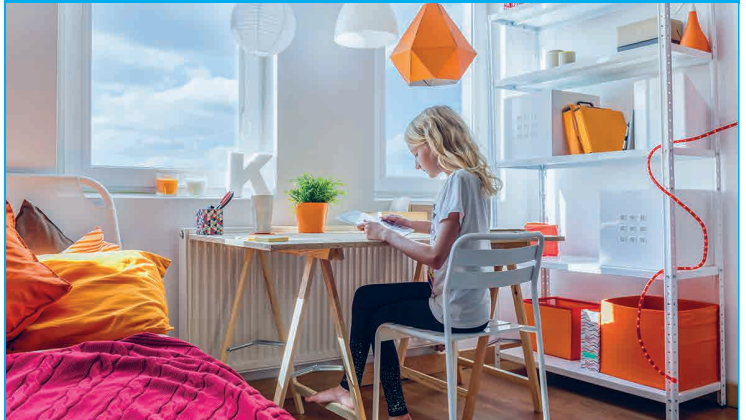
G Verbs

- 26 My school in London.
 A. am B. is C. have D. are
- 27 talk in class! Be quiet!
 A. You B. Don't C. Must D. Not
- 28 Jack always his homework before dinner.
 A. makes B. watches C. is writing D. does
- 29 have fish and chips for lunch please, Mum?
 A. I like B. Can we C. We want D. Are we
- 30 “..... you often to the cinema?” “Yes, every Saturday”.
 A. Do ... go B. Have ... like C. When do ... go D. Are ... going
- 31 Next Friday, Barack Obama England for an official visit.
 A. comes in B. can come on C. going to D. is coming to

H Situations

- 32 Your friend Susan is crying. What can you ask her?
 A. “How old are you?” C. “Are you all right?”
 B. “Who are you?” D. “Can you help?”
- 33 You are playing football in your garden. The ball goes into your neighbour's garden. What can you say to your neighbour?
 A. “I'm fine, thank you.” C. “I'm very sorry.”
 B. “Don't worry.” D. “I'm not angry.”
- 34 You are meeting a person for the first time. What can you say?
 A. “Happy to see you again.” C. “Goodnight.”
 B. “See you soon.” D. “Nice to meet you.”
- 35 A man says, “I'd like a chicken and a leg of lamb, please.” Where is he?
 A. In a butcher's. C. At a fast-food restaurant.
 B. In a chemist's. D. At a baker's.
- 36 Taylor Swift is very angry because some photographers are outside her house. She wants to be alone. What can she say to them?
 A. “Look out!” B. “Go away!” C. “Come on!” D. “Get up!”
- 37 You ask your mother, “Can I have a glass of milk, please?” What can she say when she gives the glass of milk to you?
 A. It's this. B. Here you are. C. It's over here. D. There is.

I Katy's bedroom



- 38 Katy's favourite colour is probably
 A. black B. brown C. orange D. green
- 39 Where is the desk?
 A. In the corner. C. Under the bed.
 B. On the shelves. D. Between the bed and the shelves.
- 40 The bedroom is
 A. dark B. tidy C. welcome D. careful
- 41 Find the list of words that you can associate with the picture.
 A. window, lamp, wardrobe C. boxes, shelves, plant
 B. sofa, floor, wall D. bed, skirt, curtains

J The Biggest Challenge

- 42 Why every time I speak to her?
 A. I'm laughing C. is she smiling
 B. she's crying D. does she laugh
- 43 “Ear” **doesn't** rhyme with “.....”.
 A. near B. pear C. we're D. here
- 44 There children in the classroom. They're all at the swimming-pool.
 A. are some B. haven't many C. aren't any D. is a lot of
- 45 cathedral in London has a huge dome and dates from the 17th century.
 A. Westminster B. St Paul's C. City D. Our Lady's